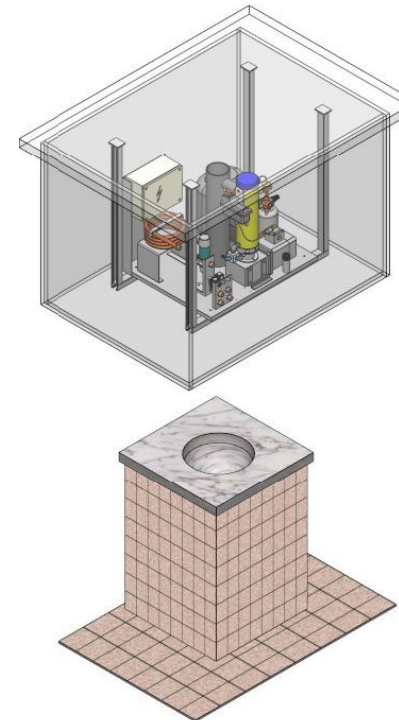
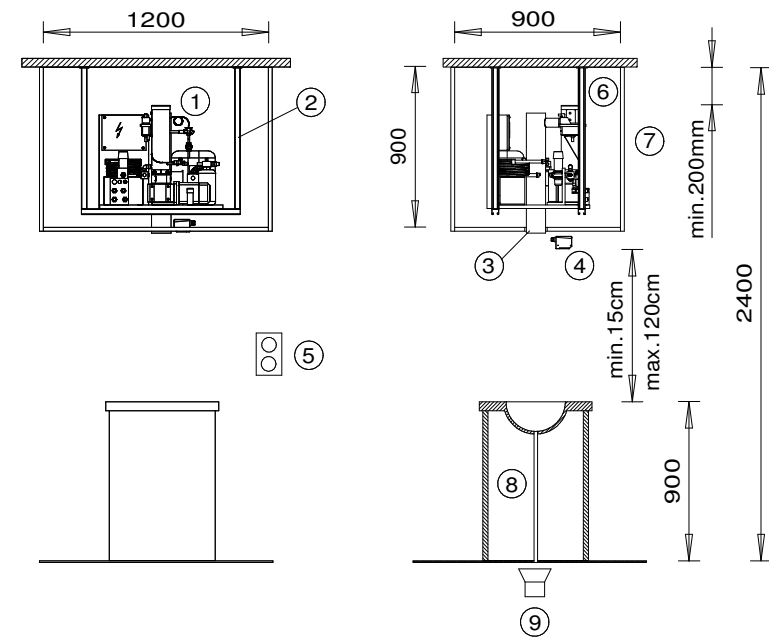
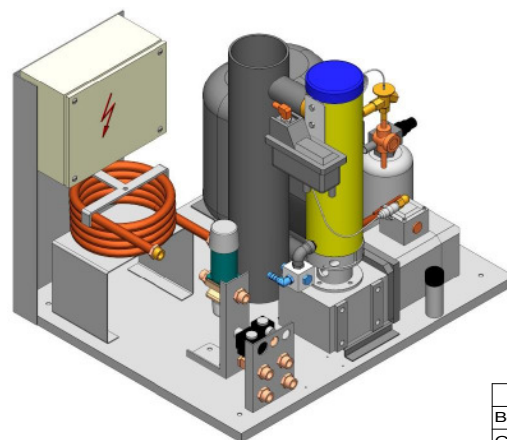


- A: freezing unit
- B: ice outlet insulated
- C: control panel with ON/OFF switch
- D: electric connection
- E: water inlet G 3/4"
- F: overflow Ø14mm
- G: cooling water inlet G 1/2"
- H: cooling water outlet G 1/2"



- 1: ice machine
- 2: mounting bracket, vibration-proof
- 3: ice outlet tube Ø110mm
- 4: reflexion light scanner
- 5: ON/OFF switch external
- 6: cover (by customer)
- 7: inspection plate (by customer)
- 8: ice bowl (by customer)
- 9: melt water drain (by customer)

This drawing is the property of
ZIEGRA-Eismaschinen GmbH
and may not be reproduced, made available to third parties, or
used for promotional purposes without express permission.

	Datum	Name	450.760.00	Maßstab:	A3
Bearb.	10.12.24	DI		1:10	
Gepr.					
Gepr.					
	45076000		ZIEGRA EISMASCHINEN		Ice machine ZBE 150 W - ZBE 350 W Sauna Installation